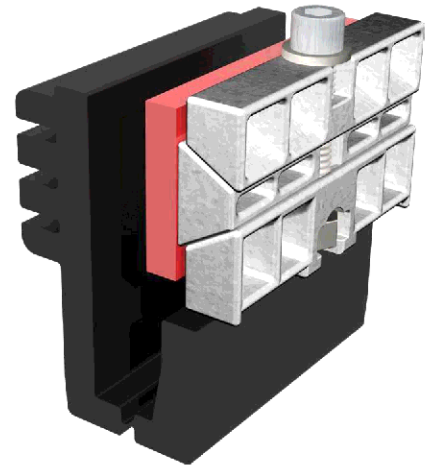


Our railing shoes use these isolators to secure the glass in place.

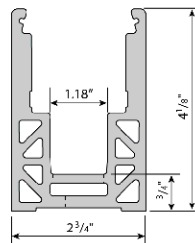
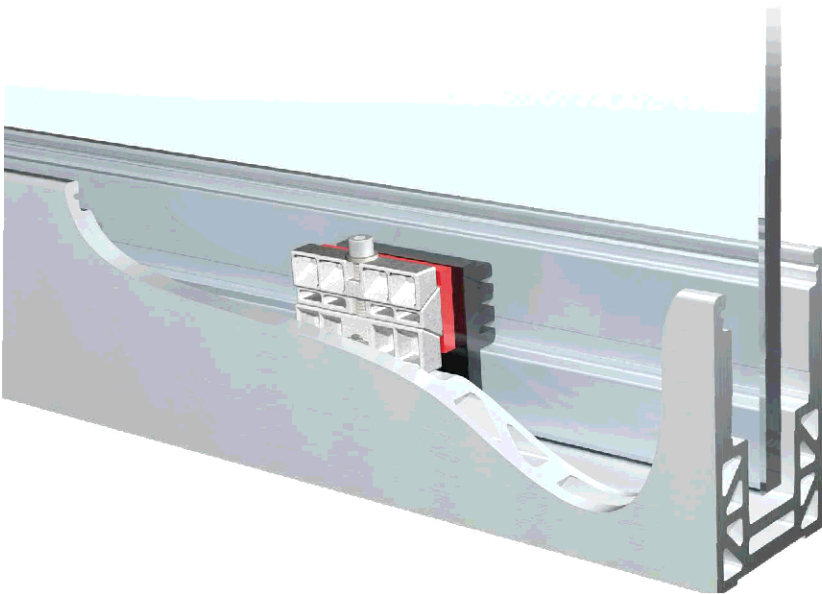
Installation is easy and saves time and money.

We have different types of isolators which can be used with glass ranging from 3/8" to 3/4" Laminated.

Due to the width of the base, if 3/8" glass is used, glass will not be centered.



Isolators to be used with 3/8" to 3/4" laminated glass.



20' lengths

We can provide different base sizes on request. We carry this size in stock